

Y LLE CELFI

EISTEDDFOD
Ceredigion
2022



Y LLE CELF

Susan Adams
Justine Allison
Duncan Ayscough
Glyn Baines
Zena Blackwell
Peter Bodenham
Zillah Bowes
Adam Buick
Hannah Cash
Carl Chapple
Sonia Cunningham
Kim Dewsbury
Natalia Dias
Michelle Dovey
Heather Eastes
Ken Elias
Geraint Ross Evans
Anna Falcini
Alice Forward
Lizz Gill
Kate Haywood
Rauni Higson
Christopher Holloway
Elin Hughes
Dilys Jackson
Llio James
Siân Wroe Jones
Elfyn Lewis
Gwenllian Llwyd
Nerea Martinez de Lecea
Danny May
James Moore
Sara Moorhouse
Martine Ormerod
Fflur {Cadwaladr} Owen
Philippa Robbins
Mia Roberts
Ruth Shelley
Laura Thomas
Seán Vicary
Philip Watkins
Stephen West
Emrys Williams

Helô!

Ry'n ni'n hynod o gyffrous i'ch croesawu chi i Y Lle Celf eleni. Mae hi wedi bod yn ffrainc gweithio ar Y Lle Celf a chael cydweithio'n agos gyda'r pwyllgor lleol. Er y cyfnod heriol a fu, credwn ein bod ni wedi curadu sioe arbennig a diddorol ar eich cyfer chi, ac hefyd wedi cydlynu rhaglen gynhwysol o ddiwyddiadau i'w darganfod yn y gofod CANFOD. Hoffem ddiolch am amynedd yr artistiaid i gyd yn ystod y broses hirfaith hon dros y blynnyddoedd diwethaf, a diolch hefyd i'r pwyllgor lleol am eu syniadau a'u gweledigaeth yn natblygiad Y Lle Celf a dathliadau eleni.

Croeso mawr i chi i gyd - a gobeithio'n fawr y byddwch yn mwynhau arddangosfa Y Lle Celf 2022.

Menna, Morgan a Rebecca - tîm Y Lle Celf

Hello!

We are very excited to welcome you to Y Lle Celf this year. It has been a privilege to work on Y Lle Celf and to work closely with the local committee. Despite the challenging times, we believe we have curated a special and interesting show for you, as well as co-ordinating an inclusive program of events to discover in the CANFOD space. We would like to thank the artists for their patience during this long process over these past few years, and would also like to thank the local committee for their ideas and vision in the development of Y Lle Celf and this year's celebrations.

A warm welcome to you all - we really hope you enjoy the 2022 Y Lle Celf exhibition.

Menna, Morgan and Rebecca - Y Lle Celf team

Gair gan y Pwyllgor Lleol

Hoffwn estyn diolch enfawr i Bwyllgor Lleol Eisteddfod Ceredigion 2022 ac i swyddogion newydd Y Lle Celf – Rebecca Hardy-Griffith, Morgan Griffith a Menna Thomas - am eu holl ymroddiad wrth gydlynu gweithgaredd Y Lle Celf eleni. Fe wnaeth y pwyllgor gwrdd 'nôl yn 2019 yn llawn brwdfrydedd ac yn llawn dop o syniadau, ac mae'n destament i'r grŵp bod y brwdfrydedd a'r amcanusrwydd hwnnw heb bylu o gwbl dros y ddwy flynedd a hanner oedd i ddod!

Fe deimlon ni o'r cychwyn bod angen ymwneud mwy gyda'r ymwelwyr a'r gymuned leol wrth lunio cyfleoedd i sgwrsio, trafod, creu a dysgu tra'n mwynhau celfyddyd weledol o'r safon uchaf. Rydym wedi creu gofod newydd eleni yn Y Lle Celf o'r enw CANFOD lle gwahodddwn ni chi i gymryd rhan mewn sgysiau sydd yn trafod y berthynas rhwng amaethyddiaeth, cynaliadwyedd a'r argyfwng hinsawdd - themâu holl bwysig i'r ardal. Cawn gyfres o ddarlithoedd hefyd fydd yn trafod gwaith artistiaid lleol megis Ogwyn Davies, Marian Delyth a phortreadwyr o gefn gwlad Ceredigion, ynghyd â sgwrs gan Lyfrgell Genedlaethol Cymru ar gasglu cyfoes. A chawn gyfle i greu - bydd nifer o artistiaid y pwyllgor yn rhedeg dosbarthiadau meistr a fydd yn rhoi cyfle i bobl ifanc ac oedolion roi cynnig ar greu darn o gelf eu hunain.

Rydym hefyd wedi creu rhaglen newydd o ddigwyddiadau o'r enw YMATEB, lle comisiynwyd gwaith newydd gan ddawnsywyr, cerddorion a beirdd mewn ymateb i'r gwaith yn yr arddangosfa agored drwy gyfres o berfformiadau a recordiadau.

Gwelwn ddathliad yn y cyntedd o waith dau artist amlycaf yr ardal - Mary Lloyd Jones a'r diweddar Ogwyn Davies - gyda'r ddau yn cyfleu'r ymdeimlad o berthyn i'r tirwedd a'r bobl a'r diwylliant.

Rydym wedi gweithio'n agos iawn gyda Chanolfan y Celfyddydau yn Aberystwyth eleni i greu rhaglen sydd yn cyd-fynd gyda'r Eisteddfod. Gwelwn arddangosfa fawr o waith a bywyd Ogwyn Davies a hefyd ein salon des refusés ein hunain - hynny yw, arddangosfa o waith artistiaid na chafodd wahoddiad y tro hwn i arddangos eu gwaith yn Y Lle Celf - ac mae yna artistiaid ynddi sydd eisioes wedi ennill Medal Aur yr Eisteddfod. Gobeithio y bydd gweld y ddwy sioe ochr yn ochr yn creu trafodaeth ddiddorol am brosesau dethol a gwobrwyo ac, wrth gwrs, cael tipyn o hwyl wrth gymharu!

Diolch i bawb wnaeth estyn llaw i wireddu ein Lle Celf eleni. Mae e wedi bod yn brofiad ffantastig.

Ffion Rhys, Cadeirydd, Is-bwyllgor Celfyddydau Gweledol Eisteddfod Ceredigion, 2022

Detholwyr Celf a Chrefft
/ Art and Craft
Selectors:

Julia Griffiths Jones
Peter Wakelin
Catrin Webster

Detholwyr
Pensaernïaeth
/Architecture Selectors:

Niall Maxwell
Zoë Quick

Detholwyr Ysgoloriaeth
Bensaernïaeth /
Architecture Scholarship
Selectors:

Gethin Jones
Ffion Lanchbury

Tîm Cydlynw a
Churadu /
Co-ordinating and
Curating Team:

Menna Thomas
Morgan Griffith
Rebecca Hardy-Griffith

Trefnydd a Phennaeth
Artistig / Organiser and
Artistic Director:

Elen Elis



A Word from the Local Committee

I would like to offer a huge thank you to the Ceredigion Eisteddfod 2022 Local Committee and to the new officials of Y Lle Celf – Rebecca Hardy-Griffith, Morgan Griffith and Menna Thomas – for their total commitment to co-ordinating the activity of this year’s Lle Celf. The committee first met in 2019 full of enthusiasm and brimming with ideas, and it is a testament to the group that their enthusiasm and sense of purpose wasn’t dimmed at all during the two and a half years which were to follow!

We felt from the beginning that there was a need to interact more fully with visitors and the local community by creating opportunities to chat, discuss, create and learn while enjoying visual arts of the highest quality. We have created within Y Lle Celf this year a new space called CANFOD (discovery) where we invite you to take part in discussions concerning the relationship between agriculture, sustainability and climate change – all-important themes in the area. We will also have a series of lectures which will discuss the work of local artists such as Ogwyn Davies, Marian Delyth and portraitists from the Ceredigion countryside, as well as a discussion by the National Library of Wales on modern collecting. And we will have a chance to create ourselves – several artists from the committee will be holding masterclasses which will allow young people and adults to create their own pieces of art.

We have also created a new programme of events called YMATEB (reaction), where dancers, musicians and poets were commissioned to react to the works in the open exhibition through a series of performances and recordings.

The foyer exhibition celebrates the works of the area’s two most prominent artists – Mary Lloyd Jones and the late Ogwyn Davies – both of whom convey the sense of belonging to the landscape, the people and the culture.

We have worked very closely this year with Aberystwyth Arts Centre to create a programme which complements the Eisteddfod. It includes a large exhibition of the life and work of Ogwyn Davies and our own salon des refusés – that is, an exhibition of the work of artists who were not invited to exhibit at Y Lle Celf this year – and there are works there by previous Eisteddfod Gold Medal winners. We hope that seeing the two shows side by side will lead to an interesting discussion about the processes of selection and awarding and, of course, having a bit of fun comparing them!

Thank you to everyone who made the effort to make Y Lle Celf a reality this year. It has been a fantastic experience.

Ffion Rhys, Chair, Eisteddfod Ceredigion 2022 Visual Arts Sub-committee

**Is-bwyllgor
Celfyddydau
Gweledol /
Visual Arts
Sub-committee**

**Cadeirydd / Chair
Ffion Rhys**

**Is-gadeirydd
/ Vice-chair
Gareth Owen**

**Ysgrifennydd /
Secretary
Gwenllian Beynon**

**Catrin Davies
Mark Davies
Wynne Melville Jones
Huw Glyn Williams
Llio James
Mari Elin
Morfudd Bevan
Teilo Trimble**



Seán Vicary

Y Fedal Aur am Gelfyddyd Gain
/ The Gold Medal for Fine Art



Natalia Dias

Y Fedal Aur am Grefft a Dylunio
/ The Gold Medal for Craft
and Design



Enillwyr:

Y Fedal Aur am Gelfyddyd Gain

Gwobr

Y Fedal Aur am Gelfyddyd Gain (replica) (Elin Jones, Aberaeron) a £5,000

i'w rannu yn ôl doethineb y detholwyr

Detholwyr:

Julia Griffiths Jones

Peter Wakelin

Catrin Webster

Dyfarnwyd y wobwr ganlynol:

Seán Vicary

Y Fedal Aur am Gelfyddyd Gain a £5,000

ENILLYDD Y WOBR CELFYDDYD GAIN

Seán Vicary

Ceredigion

Y Fedal Aur am Grefft a Dylunio

Gwobr

Y Fedal Aur am Grefft a Dylunio (replica) (Grŵp Cynghorwyr Plaid Cymru Ceredigion) a £5,000 (Cyngor Cymuned Llanbadarn Fawr) i'w rannu yn ôl doethineb y detholwyr

Detholwyr:

Julia Griffiths Jones

Peter Wakelin

Catrin Webster

Dyfarnwyd y wobwr ganlynol:

Natalia Dias

Y Fedal Aur am Grefft a Dylunio a £5,000

ENILLYDD Y WOBR CREFFT A DYLUNIO

Natalia Dias

Caerdydd

Winners:

The Gold Medal for Fine Art

Prize

The Gold Medal for Fine Art (replica) (Elin Jones, Aberaeron) and £5,000

to be awarded at the discretion of the selectors

Selectors:

Julia Griffiths Jones

Peter Wakelin

Catrin Webster

The following prize was awarded:

Seán Vicary

The Gold Medal for Fine Art and £5,000

WINNER OF THE FINE ART AWARD

Seán Vicary

Ceredigion

The Gold Medal for Craft and Design

Prize

The Gold Medal for Craft and Design (replica) (Plaid Cymru Ceredigion Councillors' Group) and £5,000 (Llanbadarn Fawr Community Council) to be shared at the discretion of the selectors

Selectors:

Julia Griffiths Jones

Peter Wakelin

Catrin Webster

The following prize was awarded:

Natalia Dias

The Gold Medal for Craft and Design and £5,000

WINNER OF THE CRAFT AND DESIGN AWARD

Natalia Dias

Cardiff

Ysgoloriaeth Artist Ifanc

Sefydlwyd yr ysgoloriaeth hon er mwyn hybu celf a chrefft yng Nghymru. Dyfernir yr ysgoloriaeth i'r ymgeisydd mwyaf addawol er mwyn ei (g)alluogi i ddilyn cwrs mewn ysgol neu goleg celf a dylunio cydnabyddedig neu fynychu dosbarthiadau meistr. Mae'r ysgoloriaeth yn agored i rai o dan 25 oed

Yn ogystal, cynigir gofod i enillydd yr ysgoloriaeth yn Y Lle Celf yn Eisteddfod Genedlaethol Cymru, Llŷn ac Eifionydd 2023

Ysgoloriaeth
£1,500

Detholwyr:
Julia Griffiths Jones
Peter Wakelin
Catrin Webster

Dyfarwyd yr Ysgoloriaeth Artist Ifanc i
Elin Hughes
Dolgellau

Young Artist Scholarship

This scholarship has been established to promote art and crafts in Wales. It is awarded to the most promising candidate to enable him or her to pursue a course in a recognised school or college of art and design or to attend master classes. The scholarship is open to those aged under 25

The winner of the scholarship will also be offered space in next year's Lle Celf at the National Eisteddfod of Wales, Llŷn ac Eifionydd 2023

Scholarship
£1,500

Selectors:
Julia Griffiths Jones
Peter Wakelin
Catrin Webster

The Young Artist Scholarship is awarded to
Elin Hughes
Dolgellau



Sylwadau'r Dewiswyr



Bu'n gyfnod rhyfedd i feirniadu Y Lle Celf. Fe wnaethon ni ddechrau yn 2020, yn edrych ar yr hyn a gyflwynwyd yn ystod gaeaf 2019/20, ac fe wnaethon ni ein dewis terfynol yng ngwanwyn 2022. Newidiodd dwy flynedd o'r pandemig nifer o bethau, yn eu plith, bu'n rhaid i ddetholwr newydd gamu i'r adwy a bod cefnogaeth yr Eisteddfod Genedlaethol i'r celfyddydau gweledol, sef Robyn Tomos (yn brofiadol ac wedi bod yn y swydd ers amser) wedi newid yn ystod y broses i dîm cydweithredol newydd sbon, sef Rebecca Hardy-Griffith, Morgan Griffith a Menna Thomas.

Cadwyd y deunydd a gyflwynwyd yn 2019/20 ar gyfer 2022, ond fe wnaethon ni argymhell y dylid cysylltu â phob ymgeisydd i weld a oedd angen newid yr hyn a gyflwynwyd, er enghraifft a oedd eitemau wedi'u gwerthu neu a oedd yr artistiaid (yn enwedig y rhai iau) wedi newid eu diddordebau'n sylweddol yn y cyfamser. Yn anochel, daeth hyn â rhywfaint o ddryswch i'r broses, a llwyddodd y tîm i'w ddatrys maes o law. Rydyn ni'n llongyfarch pawb am eu hyblygrwydd a'u hymroddiad, a arweiniodd at gyflwyniad cryf, a gobeithio, arddangosfa gyffrous.

Mae rhai o ddetholwyr y gorffennol wedi sôn am geisio creu sioe a oedd yn adlewyrchu eu barn am arferion cyfoes, neu eisiau cynrychioli nifer fach, ddethol o artistiaid. Mewn cyferbyniad, roedden ni eisiau cadw ffydd gyda'r Eisteddfod fel ffordd anhysbys ac agored o gyflwyno gwaith i bawb. Fe wnaethon ni gytuno y byddem yn cynnwys trawstoriad eang o weithiau ym mhob cyfrwng a phob idiom, ac y byddem yn dethol cynifer o artistiaid ag y gellid eu ffitio yn y gofod, hyd yn oed pe bai hynny'n golygu dangos llai o weithiau gan bob un. Wrth reswm, mae'r agwedd hon yn golygu creu arddangosfa 'gymysg' iawn, lle gall gwrthrychau wrthdaro â'i gilydd o bosib, neu efallai na fyddan nhw'n edrych ar eu gorau - ac rydyn ni'n dibynnu ar Rebecca, Morgan a Menna i wneud yn siŵr bod y gweithiau'n cael eu 'hongian' yn dda pan fydd popeth yn cyrraedd y maes.

Er gwaethaf ein hymdrechion i gynnwys cynifer o artistiaid â phosib, o gyflwyniad mor fawr, dim ond lleiafrif bach o ymgeiswyr y gellid rhoi lle iddyn nhw: yn y diwedd, 43 artist o'r 303 a gyflwynodd eu gwaith, tua un ymhob saith. Fe wnaethon ni ddewis 88 o weithiau i gyd. Trist oedd gorfod gwrthod mwy a mwy wrth i ni ddod â'n dewis i nifer ymarferol, gan wrthod ambell artist y mae gennym barch mawr iddyn nhw ar hyd y ffordd. Mae dethol yn broses boenus! Ar y llaw arall, roedden ni'n falch y byddai salon des refusés i fyny'r ffordd yng Nghanolfan y Celfyddydau, Aberystwyth, yn fodlon arddangos rhai o'r gweithiau nad oedd gyda ni le ar eu cyfer. (Mae hanes yn dangos bod rhai o arlunwyr gorau'r byd wedi'u hanwybyddu gan ddetholwyr ffôl a'u cydnabod yn hytrach mewn salons des refusés.)

Mae rhywun yn clywed am banel o feirniaid sydd ddim yn gallu cytuno ar un enillydd, ac yn y pen draw yn gwobrwo ymgeiswyr fel cyfaddawd, felly roeddem yn falch iawn o weld ein bod yn unfrydol. Ein hunig gyfyng-gyngor, o ystyried y ffordd y caiff y gwobrau eu rhannu rhwng celf gain a chrefft, oedd y diffiniadau: problem gyson pan fydd nifer o gyflwyniadau mewn disgyblaethau crefft fel serameg, tecstilau a gwaith metel yn ymwneud â mynegiant artistig yn hytrach na swyddogaeth ymarferol.

Dyfarnwyd Y Fedal Aur am Grefft a Dylunio i Natalia Dias. Astudiodd Natalia yng Ngholeg Sir Gâr ac mae'n gweithio yng Nghaerdydd yn y Fireworks Clay Studios. Cawsom ein cyfareddu gan wreiddioldeb a phresenoldeb ei phennau cerfluniol o ryfelwyr benywaidd o fyth a chwedl, wedi'u haddurno â ffurfiau geometregol o fyd natur, sy'n awgrymu metamorffosis rhwng bod dynol, planhigyn a bwystfil. Fe wnaethon ni synhwyro ei hagwedd drwyadl at ei chrefft: ei sgil anhygoel mewn adeiladu ffurfiau mor uchelgeisiol ond eto'n goeth a disgleirdeb a hylifedd ei gwaith gwydro, sydd wedi'u hysbrydoli gan draddodiadau serameg Portiwgal, lle cafodd ei magu. I ni, roedd ei cherfluniau yn sefyll allan fel gwrthrychau gwych ac yn ddatganiadau ffeministaidd ac amgylcheddol anhygoel ynglŷn â phŵer menywod ac elfen anwahanadwy'r ddynoliaeth oddi wrth natur.

Aeth Y Fedal Aur am Gelfyddyd Gain i Seán Vicary am ei waith animeiddio fideo, a oedd yn wreiddiol o gyffrous ac yn gyfoethog o atgofus. Symudodd Seán i Gymru bron i 30 mlynedd yn ôl, ac mae'n byw yn Aberteifi ar hyn o bryd. Er iddo astudio peintio yn wreiddiol, cafodd ei gyfareddu gan bosibiliadau'r cyfryngau newydd, ar ffurf ffotograffiaeth ac animeiddio digidol. Mae ei fideo Sitelines yn ymateb i nofel Alan Garner The Owl Service, a oedd yn ei dro yn ymateb i stori Blodeuwedd, gan adeiladu naratif newydd o amgylch y stori yng nghwm Llanymawddwy yn y 1960au. Mae ffilm Seán yn dwyn i gof bresenoldeb cysylltiadau cyfoethog y gorffennol yn nyffrynnoedd ucheldir Cymru. Mae'n crisialu gwrthrychau sy'n cael eu darganfod - darn o blastr mwng ceffyl, hoelion a wnaed â llaw, 'potel wrach' - a'u coreograffu mewn dawns swreal, ddychmygol i gerddoriaeth amser dwfn. Cawsom ein hudo wrth iddo asio natur, technoleg, barddoniaeth ac amwysedd. Gellir gweld ei waith fel un sy'n parhau â'r traddodiad neo-ramantaidd ers y 1930au, sy'n ymwneud â thirwedd Cymru a'r presennol a'r dyfodol wrth archwilio cyfleoedd cyfryngau newydd.

Dyfarnwyd yr Ysgoloriaeth Artist Ifanc i'r seramegydd Elin Hughes, a raddiodd o Brifysgol Metropolitan Caerdydd yn 2019. Roeddem wrth ein bodd gyda sensitifrwydd cerfluniol, y ffraethineb a natur dyngar ei photiau, sy'n chwarae ar y ffurfiau traddodiadol a'u troi'n bethau newydd. Mae'n astudio serameg hanesyddol a gwneuthurwyr cynnar a mathau haniaethol o ffurfiau ac addurniadau er mwyn talu gwrogaeth iddyn nhw wrth eu trawsnewid mewn ffordd ddychmygus. Mae'n ystyried ei phroses fel trosiad am adnewyddu.



Dywedodd: “Mae’r llestri yn dechrau ar yr olwyn Iunio ond yn cael eu cydosod â llaw, eu morffio a’u sleisio, eu tynnu’n ddarnau a’u pwytho’n ôl at ei gilydd, eu pwnio a’u clytiones eu bod prin yn gallu cael eu hadnabod yn eu ffurfiau gwreiddiol. Daw creu yn frwydr bryderus, llawn risg gyda disgyrchiant, a dydw i ddim wastad yn ei hennill, ac o ganlyniad mae’r gwrthrychau hyn mewn cyflwr cyson o ansicrwydd a chwymp.” Mae Elin yn seren y dyfodol. Ers gwneud cais i’r Eisteddfod, cynhaliodd ei harddangosfa unigol gyntaf, yn Oriol Plas Glyn-y-weddw yn Llanbedrog, a dangosodd ei gwaith yn Ffair Gelf Llundain a digwyddiad y Cyngor Crefft yn Liberty’s. Byddwn yn dilyn ei gyrfa â diddordeb mawr wrth iddi ddatblygu.

Edrychwn ymlaen at weld pa artistiaid neu weithiau sy’n cael eu dewis gan bobl eraill am wobrau ar ôl i’r arddangosfa agor – Gwobr Ivor Davies, Gwobr Cymdeithas Celfyddyd Gyfoes Cymru ac, yn bwysicach, Gwobr Josef Herman/Dewis y Bobl, y penderfynir arni gan bleidlais y gynulleidfa.

Yn seiliedig ar ein profiad ni eleni, rydyn ni’n gwneud rhai argymhellion ar gyfer y dyfodol. Gyntaf oll, credwn y byddai’n gwella mwynhad ac ymgysylltiad ymwelwyr i gael testunau dehongli byrion ar gyfer pob darn o waith, fel y rheini mewn arddangosfeydd sydd wedi’u curadu mewn amgueddfeydd. Mae hyn yn golygu buddsoddiad ychwanegol o ran amser ac ymdrech gan yr Eisteddfod, ond gall dehongli craff egluro pam y cafodd darnau eu dethol a rhoi cefndir i’r syniadau (sy’n heriol weithiau) y tu ôl iddyn nhw. Efallai bod yr Eisteddfod yn unigryw fel arddangosfa gelf sy’n denu cynulleidfa gyffredinol eang yn ogystal ag ymwelwyr â diddordeb arbennig, a dylai anelu at ddenu pawb sy’n chwilfrydig ac â meddwl agored. Yn ail, credwn y gellid ystyried anrhydeddu, drwy wahoddiad, artistiaid enwog o Gymru, sy’n annhebygol o gystadlu mewn cystadlaethau agored, fel yn y 1960au, lle dyfarnwyd Medalau Aur i Ceri Richards, Merlyn Evans a David Jones am eu gwasanaeth i fyd celf yng Nghymru. I gloi, byddem wrth ein bodd pe gellid dod o hyd i adnoddau i fynd â rhywfaint o arddangosfa Y Lle Celf, neu’r arddangosfa gyfan, ar daith i leoliadau partneriaid, yng Nghymru a thu hwnt, i rannu’n ehangach y pethau gwych y mae artistiaid cyfoes a chrefftwr Cymru wedi’u creu.

Julia Griffiths Jones, Peter Wakelin, Catrin Webster





Selectors' Comments

It was a strange time to judge Y Lle Celf. We began in 2020, looking at submissions made in winter 2019/20, and we made our final selection in spring 2022. Two years of the pandemic changed many things, not least that a new selector had to step in and that the visual art support from the National Eisteddfod switched in mid-stream from Robyn Tomos (long-established and experienced in the role) to the brand-new collaborative team of Rebecca Hardy-Griffith, Morgan Griffith and Menna Thomas.

The entries from 2019/20 were held over for 2022 but we recommended that all applicants should be contacted to see if they needed to amend their submissions, for example if items had been sold or if the artists (especially younger ones) had radically changed their interests in the intervening time. Inevitably, all this brought some confusion to the process, which the team ably resolved in due course. We congratulate everyone for their flexibility and dedication, which resulted in a strong submission and, we hope, an exciting exhibition.

Some past selectors have talked about seeking to create a show that reflected their views of contemporary practice, or about wishing to represent a small, select number of artists. By contrast, we wanted to keep faith with the Eisteddfod as an anonymous submission open to all-comers. We agreed that we would include a broad cross-section of works in all media and all idioms, and we would select as many artists as we were advised could be fitted into the space, even if that meant showing fewer works by each. Of course, this approach creates a very 'mixed' mixed exhibition in which objects potentially clash or might not look their best – and here we rely on Rebecca, Morgan and Menna to make the 'hang' work well when everything arrives on the maes.

Notwithstanding our efforts to include as many artists as possible, from such a big submission only a small minority of entrants could be given space: in the end it was 43 artists from an entry of 303, around one in seven. We chose 88 works in total. We were sad to have to cut out more and more as we whittled our selection down to a feasible number, rejecting along the way some artists we hold in high regard. Selecting is a painful process! On the other hand, we were pleased to know that a salon des refusés just up the road at Aberystwyth Arts Centre would showcase some of the work we didn't have room for. (History shows that some of the world's greatest artists have been overlooked by foolish selectors and recognised instead in salons des refusés.)

One hears about judging panels that can't agree on clear winners and end up rewarding compromise candidates, so we were delighted to discover we were unanimous. Our only dilemma, given the division of the awards between fine art and craft, was over definitions: a perennial issue when many submissions in craft disciplines such as ceramics, textiles and metalwork are concerned with artistic expression rather than practical function.

We awarded the **Gold Medal in Craft and Design** to Natalia Dias. Natalia studied at Coleg Sir Gâr and is based in Cardiff, where she works from Fireworks Clay Studios. We were compelled by the originality and sheer presence of her sculptural heads of warrior women from myth and legend, embellished with geometrical forms from nature that hint at a metamorphosis between human, plant and beast. We sensed her meticulous approach to craft: her outstanding skill in constructing such ambitious yet refined forms and the brilliance and fluidity of her glazes, which are inspired by ceramic traditions where she grew up in Portugal. Her sculptures stood out to us as both superbly accomplished objects and remarkable feminist and environmentalist statements about the power of women and the inseparability of humanity from nature.

The **Gold Medal in Fine Art** went to Seán Vicary for his video animations, which we found to be both excitingly original and richly evocative. Seán moved to Wales nearly thirty years ago and currently lives in Cardigan. Although he studied painting originally, he was captivated by the possibilities of new media in the forms of digital photography and animation. His video *Sitelines* is a response to Alan Garner's novel *The Owl Service*, which in turn responded to the story of *Blodeuwedd*, building a new narrative around it in the setting of the Llanymawddwy valley of the 1960s. Seán's film evokes the presence of a richly connected past in the upland valleys of Wales. He captures found objects – a fragment of horse-hair plaster, hand-made nails, a 'witch bottle' – and choreographs them in a surreal, imaginary dance to the music of deep time. We were spellbound by his melding of nature, technology, poetry and ambiguity. His work can be seen as continuing a neo-romantic tradition since the 1930s related to the landscape of Wales while being absolutely of the present and future in exploring the opportunities of new media.

We awarded the **Young Artist Scholarship** to ceramicist Elin Hughes, who graduated from Cardiff Metropolitan University in 2019. We loved the sculptural sensitivity, wit and humane character of her pots, which play with traditional forms and turn them into something new. She studies historical ceramics and earlier makers and abstracts forms and decorations to pay homage to them while breaking them down imaginatively. She sees her process as a metaphor for renewal. She says: "The vessels begin on the throwing wheel but are assembled together by hand, morphed and sliced, pulled apart and stitched back together, punched through and patched up until they are hardly recognisable as the forms they started out as. Making becomes a fraught and risky battle with gravity which I don't always win and as a result these objects are in a constant state of precariousness and collapse." Elin is a rising star. Since applying to the Eisteddfod she has had her first solo exhibition, at Oriel Plas Glyn-y-weddw in Llanbedrog, and she has shown at the London Art Fair and a Crafts Council event at Liberty's. We will watch her developing career with great interest.

We look forward to finding out which artists or works are chosen by other people for prizes after the exhibition has opened – the Ivor Davies Award, the Contemporary Art Society for Wales Purchase Award and, most importantly, the Josef Herman/People's Choice Award, which is decided by audience vote.

Based on our experience this year, we make some recommendations for the future. First, we think that it would enhance visitors' enjoyment and engagement to have short interpretive texts for each work, like those in curated museum exhibitions. This requires an extra investment of time and effort by the Eisteddfod but well-judged interpretation can explain why pieces were selected and give routes into the ideas (sometimes challenging) that lie behind them. The Eisteddfod is perhaps unique as an art exhibition that attracts a wide general audience as well as visitors with a special interest, and it should aim to speak to everyone who is curious and open-minded. Second, we think consideration could be given to honouring by invitation of famous Welsh artists who are unlikely to enter open competitions, as in the 1960s when Gold Medals for services to Welsh art were awarded to Ceri Richards, Merlyn Evans and David Jones. Finally, we would be delighted if resources could be found to tour some or all of the Lle Celf exhibition to partner venues, in Wales and beyond, to share more widely the wonderful things Welsh contemporary artists and craftspeople have produced.

Julia Griffiths Jones, Peter Wakelin, Catrin Webster



Ysgoloriaeth Bensaerniaeth

Sefydlwyd yr ysgoloriaeth hon er mwyn hybu pensaernïaeth a dylunio yng Nghymru ac fe'i dyfernir i'r ymgeisydd mwyaf addawol er mwyn ei (g)alluogi i ledaenu ei (h)ymwybyddiaeth o bensaernïaeth greadigol. Mae'r ysgoloriaeth yn agored i rai o dan 25 oed

Ysgoloriaeth: £1,500

Cefnogir gan Gomisiwn Dylunio Cymru / Cymdeithas Frenhinol Penseiri yng Nghymru

Detholwyr:

Gethin Jones

Ffion Lanchbury

Dyfernir yr Ysgoloriaeth Bensaernïaeth i Sonia Cunningham
Machynlleth / Canolbarth Lloegr

Architecture Scholarship

This scholarship has been established to promote architecture and design in Wales. The scholarship is awarded to the most promising candidate to enable him or her to further his or her understanding of creative architecture. The scholarship is open to those under 25 years

Scholarship: £1,500

Supported by the Design Commission for Wales / Royal Society of Architects in Wales

Selectors:

Gethin Jones

Ffion Lanchbury

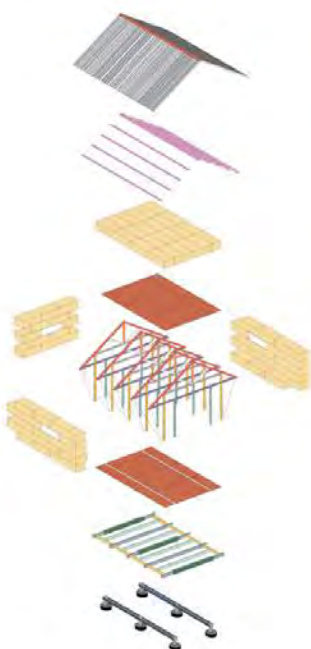
The Architecture Scholarship is awarded to Sonia Cunningham
Machynlleth / Midlands

CATkins Pavilion

MASTERS - YEAR 1 [Please note: This was designed independently, then developed/built as a team effort]

Location: Centre for Alternative Technology, Machynlleth

The brief was to design, pitch and build an educational pavilion for the CATkins nursery on the CAT site for completion of a 'Design and Build' module. A 'three little pigs' house was selected as an example of site response to creating a playful pavilion to educate users about environmental design.



Mynegi Stori

Y ddwy elfen fwyaf yng ngwaith Sonia a wnaeth gymaint o argraff ar y beirniaid oedd sut yr oedd yn mynegi'r stori a'i hymdriniaeth â'r siwrnai yn y ddau brif brosiect. Roedd prosiect Mynachlog y Gwenyn yn cyfleu dull Sonia a oedd wedi'i seilio ar ymchwil, ac a oedd yn arwain at ddyluniad wedi'i ddarlunio'n hardd. Roedd proses feddwl a datblygiad cysyniad y dylunydd yn cael eu cyfleu drwy gymysgedd llwyddiannus o ddarluniadau a delweddau CGI panoramig. Fel rhan o gyflwyniad Mynachlog y Gwenyn, mae golygon allweddol o'r siwrnai i'w gweld o amgylch gweddillion y presennol gydag integreiddiad y dyluniad newydd yn dangos cynnydd y profiad tuag at Deml y Gwenyn. Mae arddull graffigol yn helpu i adrodd stori'r cysyniad gyda phaled o liwiau naturiol.

Cyflwynodd Sonia bortffolio manwl a thrylwyr gyda sgiliau cyflwyno a lluniadu deniadol. Gellir gweld cynnydd y dyluniad drwy archwilio syniadau, arbrofi â deunyddiau, golau a gofod mewn brasluniau a modelau cyd-destunol, sy'n gwella dealltwriaeth y gwylwyr o'r cysyniad.

Mae prosiect Ysgol Llanidloes yn dangos agwedd bwylllog ac aeddfed, a chwareus, tuag at y prosiect. Mae hi'n ystyried pwysigrwydd gofodau allanol a sut mae'r trothwyon rhwng y gofodau mewnol ac allanol yn creu mannau ychwanegol i'r meddianwyr eu darganfod. Rhoddodd y pwyslais manwl ar rannau penodol o'r adeilad bleser arbennig inni gyda sylw i'r hyn a fyddai'n eu gwneud yn llwyddiannus i'r meddianwyr. Mae'r cynllun mewnol yn gwneud y ffiniau rhwng ystafelloedd dosbarth a mannau addysgu ffurfiol yn amwys, ac mae'r defnydd o ddeunyddiau naturiol yn rhoi tynerwch i'r dyluniad. Wedi'i ddarlunio'n hardd unwaith eto, mae Sonia wedi llwyddo i gyfleu ansawdd y gofodau, gan ddangos sut y gall golau a deunyddiau gyfoethog ansawdd gofod a phrofiad i'r plant sy'n defnyddio'r gofodau.

Edrychwn ymlaen at weld sut fydd yr Ysgoloriaeth Bensaerniaeth yn helpu Sonia i ddatblygu yn ystod y blynyddoedd nesaf.

Gethin Jones
(Saer Architects)

Ffion Lanchbury
(Uwch Gydymaith
/ Pensaer, Rio
Architects Ltd)



Expressing a Story

The two main elements of Sonia's work that impressed the judges was how she expressed the story and her exploration of the journey on the two stand out projects. The Bee Monastery project conveyed Sonia's detailed research-led approach, which informed a beautifully illustrated design. The designer's thought process and concept development was conveyed through a successful mix of illustrations and panoramic CGI imagery. As part of the Bee Monastery presentation, key views of the journey are provided around the existing ruins with the new design integrations showing the progression of the experience towards the Bee Temple. A complimentary graphical style assists the storytelling of the concept with a pallet of natural colours.

Sonia presented a detailed and thorough portfolio with attractive presentation and drawing skills. Design progression can be seen through the exploration of ideas, experimentation with materials, light and space by sketches and contextual models, which strengthens the viewers' understanding of the concept.

The Llanidloes School project demonstrates a considered and mature, yet playful approach to a project. She explores the importance of the external spaces and how the thresholds between the internal and external spaces create additional areas for the occupants to discover. We particularly enjoyed the more detailed emphasis on particular parts of the building with an exploration of what will make these successful for the occupants. The internal layout blurs the boundaries between set classrooms and informal teaching areas, while the use of natural materials provides a softness to the design. Again beautifully illustrated, Sonia managed to convey the quality of the spaces, illustrating how the lighting and materiality can enrich the quality of space and experience for the children inhabiting the spaces.

We look forward to seeing how the Architectural Scholarship assists Sonia in her development over the next few years.

Gethin Jones
(Saer Architects)

Ffion Lanchbry
(Senior Associate /
Architect, Rio Architects
Ltd)



Gwobrau Ychwanegol

Gwobr Josef Herman - Dewis y Bobl

Gwobr: £500 (Sefydliad Celf Josef Herman)

I'w dyfarnu i'r darn neu'r casgliad mwyaf poblogaidd o waith yn yr Arddangosfa

Agored

Fe'ch gwahoddir i edrych yn fanwl ar y gwaith i gyd cyn penderfynu ar eich ffefryn. Rhowch enw'r artist ar y papur pleidleisio. Bydd y bleidlais yn cau am 18:00 nos Wener, 5 Awst er mwyn cael amser i gyfri'r pleidleisiau a chysylltu â'r enillydd

Cyhoeddir enw'r enillydd yn Y Lle Celf am 15:00 ddydd Sadwrn, 6 Awst

Gwobr Ifor Davies

Gwobr: £600

Dyfernir am y gwaith yn yr Arddangosfa Agored sy'n cyfleu ysbryd y frwydr dros iaith, diwylliant a gwleidyddiaeth Cymru

Cyhoeddir enw'r enillydd yn Y Lle Celf am 14:30 ddydd Llun, 1 Awst

Gwobr Tony Goble

Gwobr: £500 (er cof am Tony Goble).

Dyfernir am waith gan artist sy'n cyfleu ysbryd barddonol y genedl Geltaidd hon, sy'n arddangos yn yr Arddangosfa Agored am y tro cyntaf

Gwobr Bwrcasu CCGC

Cymdeithas Celfyddyd Gyfoes Cymru

Dyfernir gwobr bwrcasu gan Gymdeithas Celfyddyd Gyfoes Cymru i waith yn yr Arddangosfa Agored. Ychwanegir y gwaith at gasgliad CCGC i'w drosglwyddo maes o law i oriel gyhoeddus yng Nghymru

Pwrcasiad Amgueddfa Cymru

Prynir gwaith gan artist sy'n arddangos yn yr Arddangosfa Agored gan Amgueddfa Cymru fel arwydd o'i hymrwymiad i gefnogi artistiaid Cymru a chodi ymwybyddiaeth o'u pwysigrwydd yng nghyd-destun ei strategaeth gasglu

Additional Awards

Josef Herman Award - The People's Choice

Prize: £500 (Josef Herman Art Foundation)

Awarded to the most popular piece or collection of work in the Open Exhibition

We invite you to take a careful look at all the work before deciding on your favourite. Write the name of the artist on the voting slip. Voting will close at 18:00 on Friday, 5 August in order to allow for counting the votes and contacting the winner

The winner's name will be announced at Y Lle Celf at 15:00 on Saturday, 6 August

Ifor Davies Award

Prize: £600

Awarded for the work in the Open Exhibition that conveys the spirit of activism in the struggle for language, culture and politics in Wales

The name of the winner will be announced at Y Lle Celf at 14:30 on Monday, 1 August

Tony Goble Award

Prize: £500 (in memory of Tony Goble)

Awarded for work that conveys the poetic spirit of this Celtic nation, by an artist exhibiting in the Open Exhibition for the first time

CASW Purchase Prize

The Contemporary Art Society for Wales will award a purchase prize to a work in the Open Exhibition. The purchased work will enter the CASW collection for subsequent distribution to a public gallery in Wales

National Museum Wales Purchase

National Museum Wales will purchase work by an artist exhibiting in the Open Exhibition to indicate its commitment to supporting Wales' artists and to raise awareness of their importance to its acquisition strategy



Susan Adams

Clown

Olew ar ganfas / Oil on canvas

£3,650



Justine Allison

Llinellau ac Osgiliad / Lines and Oscillation

Porslen / Porcelain

£2,500

Duncan Ayscough

Distyllu / Distillation

Cerameg ac aur / Ceramic and gold

£1,200





Glyn Baines

Di-deitl / Untitled

Acrylig a gludwaith ar fwrdd /

Acrylic and collage on board

£1,000

Zena Blackwell

Crïo Crïo / Cry Cry

Olew ar ganfas / Oil on canvas

£2,500



Peter Bodenham

Lle - Llestri Môr / Place - Sea Crockery

Llestri cerameg ar blinth pren

/ Ceramic vessels on wooden plinth

£1,730





Zillah Bowes

(Cyfres Green Dark: portreadau a thirlun yng ngolau'r Iloer / Green Dark Series: portraits and a landscape in moonlight)

Elinor 'Rhiwnant' & Alice

Print Teip-C 1 o 5/C-Type print 1 of 5

£1,200

Treheslog

Print Teip-C 1 o 5/C-Type print 1 of 5

£1,200

Maurice 'Talwrn'

Print Teip-C 1 o 5/C-Type print 1 of 5

£1,200

Dan 'Talwrn'

Print Teip-C 1 o 5/C-Type print 1 of 5

£1,200

Adam Buick

Astudiaeth Tirlun / Landscape Study

196 o jariau cerameg gyda chynhwysion tirwedd

/ 196 ceramic jars with landscape inclusions

£25,000



Hannah Cash

Dod â'r Corff yn Ôl i Mewn i Mi /
Draw the Body Back in To Me
Amlgyfrwng / Multimedia
naw /nfs



Carl Chapple

Oliver Robertson (Dawnsywyr Cyfnod
Clo /Lockdown Dancers 75)
Olew ar banel /Oil on panel
£720

Andrea Battaggia (Dawnsywyr Cyfnod
Clo /Lockdown Dancers 86)
Olew ar banel /Oil on panel
£720





Natalia Dias

Blodeuwedd

Porslen a derw / Porcelain and oak £8,000

Acantha

Porslen a derw / Porcelain and oak £5,500

Brigid

Porslen a derw / Porcelain and oak £4,500

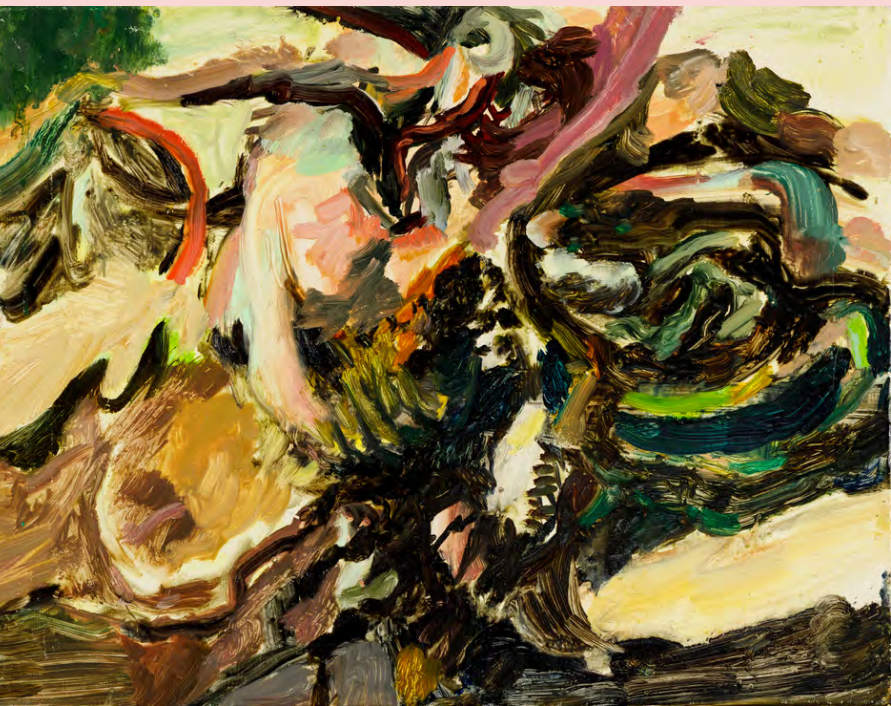
Cernunnos

Porslen a derw / Porcelain and oak £7,000

Branwen

Porslen a derw / Porcelain and oak £4,500





Michelle Dovey

Coeden Adar / Bird Tree

Olew ar ganfas / Oil on canvas

£950



Kim Dewsbury

Y Cynhaeaf / The Harvest

Olew ar ganfas / Oil on canvas

£1,300

Aredwn y caeau a gwasgaru

/ We plough the fields and scatter

Olew ar ganfas / Oil on canvas

£1,650

Heather Eastes

Cân i'r Môr / Song to the Sea

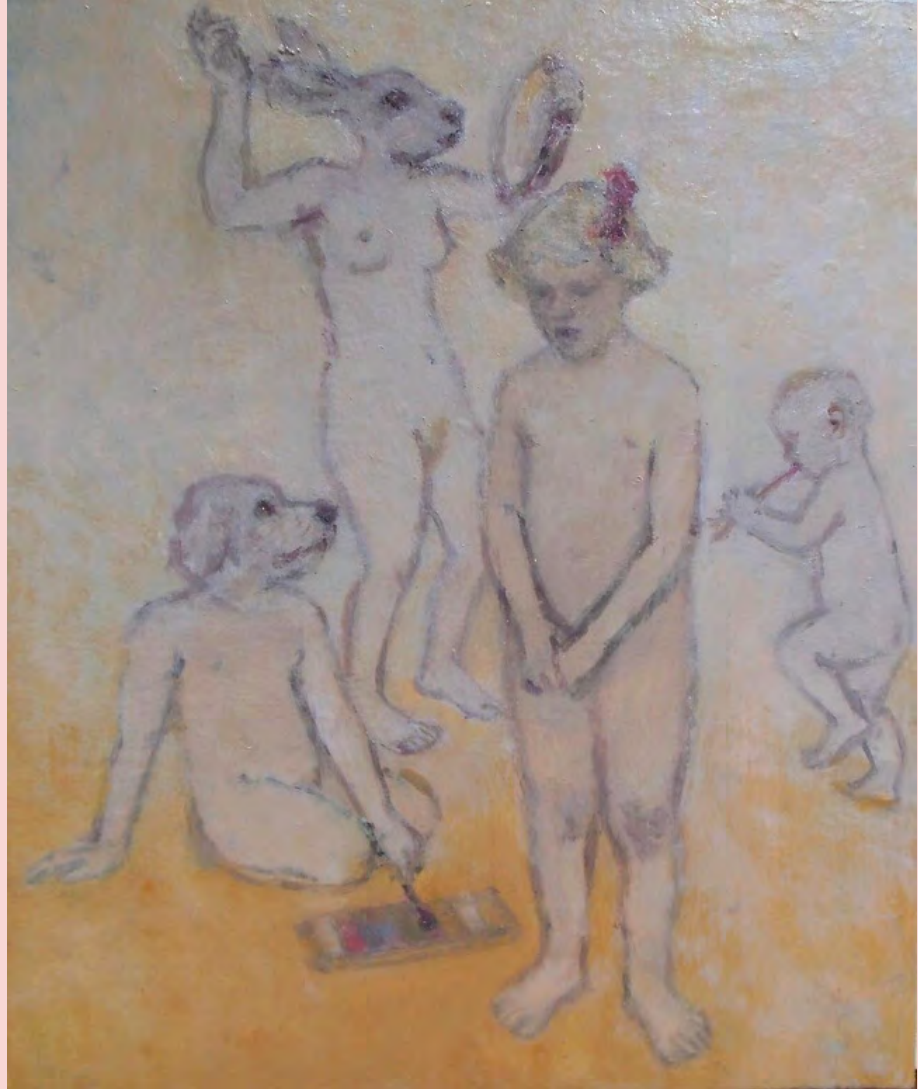
Olew ar bren / Oil on wood

£850

Dawns ar Lan y Môr/Shore Dance

Olew ar bren / Oil on wood

£850



Ken Elias

Lluniadu Dynion (i)

/ Picturing Men (i)

Acrylig ar bapur gyda gludwaith

/ Acrylic on paper with collage

£2,500





Geraint Ross Evans

Y Map a'r Diriogaeth / The Map and the Territory

Siarcol ar bapur / Charcoal on paper

£2,500





Anna Falcini

Chère Julie

Ffilm 32m / 32m Film

£15,000

Alice Forward

Coelcerth (Onnen) / Pyre (Ash)

Dyfriw ar bapur / Watercolour on paper

£1,250



Lizz Gill

Cysylltedd / Connectivity

Crochenwaith du a terracotta, plinth dur a phren

/ Black and terracotta stoneware, steel and wooden plinth

£375 - £425



Kate Haywood

Dalloop

Porslen a gwydredd

/ Porcelain and glaze £380

Luff

Porslen a gwydredd

/ Porcelain and glaze £830

Rone

Porslen a gwydredd

/ Porcelain and glaze £680

Ness

Porslen, cortyn a gwydredd

/ Porcelain, cord and glaze £580

Sillion

Porslen ac aur

/ Porcelain and gold leaf £750

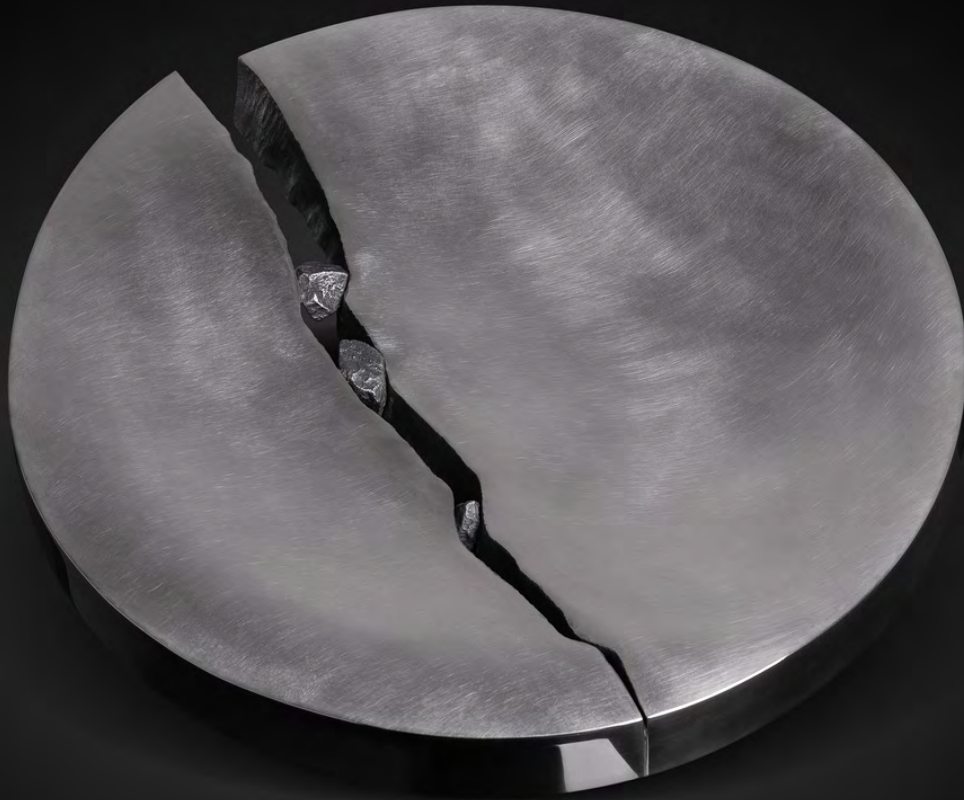


Windle a Wurr / Windle and Wurr

Porslen ac arian

/ Porcelain and silver £1,500

Ffotograffiaeth / Photography:
Dewi Tannat Lloyd



Rauni Higson

Tagenni / Chockstones
Arian sterling / Sterling silver
£10,400

Llestr Tagenni
/ Chockstone Vessel
Arian sterling / Sterling silver
£4,250

Christopher Holloway

Meddwl am yr Haf a Dreuliwyd,
Bryn Pen y Foel / Thinking of
Summer Spent, Pen y Foel Hill
Olew ar ganfas / Oil on canvas
£1,800





Elin Hughes

Fâs Llanberis / Llanberis Vase
Clai coch a gwedreidd
/ Red clay and glaze £350

Jwg Clun / Clun Jug
Clai coch a gwedreidd
/ Red clay and glaze £500

Fâs Pabi / Poppy Vase
Clai coch a gwedreidd
/ Red clay and glaze £550

Fâs Gwyddfïd
/ Honeysuckle Vase
Clai coch a gwedreidd
/ Red clay and glaze £475

Jwg Bedwen Fai
/ Maypole Jug
Clai coch a gwedreidd
/ Red clay and glaze £450

Jwg Tiwlip / Tulip Jug
Clai coch a gwedreidd
/ Red clay and glaze £450

Jwg Aberhonddu / Brecon Jug
Clai coch a gwedreidd
/ Red clay and glaze £450

Fâs Bro Gwyr / Gower Vase
Clai coch a gwedreidd
/ Red clay and glaze £475

Jwg Powys / Powys Jug
Clai coch a gwedreidd
/ Red clay and glaze £400





Dilys Jackson

Ffurf Paill Holtt
/ Split Pollen Form
Efydd / Bronze
£2,000

Llio James

Bloc Coch / Red Block
Carthen ddwbl wedi'i gwehyddu â
llaw. Gwlân 100% / Hand woven
double blanket. 100% Wool £695

Llwybrau / Paths
Carthen ddwbl wedi'i gwehyddu â
llaw. Gwlân 100% / Hand woven
double blanket. 100% Wool £695

Dot
Carthen ddwbl wedi'i gwehyddu â
llaw. Gwlân 100% / Hand woven
double blanket. 100% Wool £695





Siân Wroe Jones

Dad ar Doriad Gwawr / Dad at Dawn
Olew ar ganfas / Oil on canvas
naw / nfs



Elfyn Lewis

Ynys Calch
Acrylig ar mdf / Acrylic on mdf
£1,100

Bodawen
Acrylig ar mdf / Acrylic on mdf
£1,300

Tan yr Allt
Acrylig ar mdf / Acrylic on mdf
£1,500

Cwm Mawr
Acrylig ar mdf / Acrylic on mdf
£1,100





Gwenllian Llwyd

Mamiath

Gosodiad ffilm / Film instalation
naw / nfs



Nerea Martinez de Lecea

Teagan

Paentiad digidol / Digital painting

£2,500

Syfi

Paentiad digidol / Digital painting

£2,500





Danny May

Arwahanrwydd / Isolation
Olew ar ganfas / Oil on canvas
£6,250

Deffroad / Wakening
Olew ar ganfas / Oil on canvas
£7,250

Paradwys Amryliw / Technicolour Paradise
Paent ar bren sydd wedi'i durnio / Paint on turned
wood £15,350



James Moore

Dyb Twymyn / Fever Dub

Olew ar ganfas / Oil on canvas
£520

Brenin y Neidr / King of Snake

Olew ar ganfas / Oil on canvas
£520

Symudwr Neis / Nice Mover

Olew ar ganfas / Oil on canvas
£520

Rydym yn Bodoli / We Exist

Olew ar ganfas / Oil on canvas
£520



Sara Moorhouse

Sadwrn 1 / Saturn 1

Crochenwaith ac iswydredd /
Stoneware and underglaze
£950

Sadwrn 2 / Saturn 2

Crochenwaith ac iswydredd /
Stoneware and underglaze
£575

Planau Sadwrn 1

/ Saturn Planes 1

Crochenwaith ac iswydredd /
Stoneware and underglaze
£375

Planau Sadwrn 2

/ Saturn Planes 2

Crochenwaith ac iswydredd /
Stoneware and underglaze
£750

Planau Sadwrn 3

/ Saturn Planes 3

Crochenwaith ac iswydredd /
Stoneware and underglaze
£950

Planau Sadwrn 4

/ Saturn Planes 4

Crochenwaith ac iswydredd /
Stoneware and underglaze
£850 - £950





Martine Ormerod

Derbyniad / Acceptance

Siarcol, gludwaith, edau

/ Charcoal, collage, thread

naw / nfs



Fflur {Cadwaladr} Owen

Sbesimen Rhif {017} a Sbesimen Rhif
{019} / Specimen No. {017} and
Specimen No. {019}

Pren celynen Gymreig a lledr Eidaleg /
Welsh holly wood and Italian leather
£1,750



Philippa Robbins

Rafft, ar ôl Gnoli / Raft, after Gnoli
Acrylig ar banel bedw
/ Acrylic on birch panel
£2,900



Ystafell Mewn Gwesty / Hotel Room
Acrylig ar banel bedw
/ Acrylic on birch panel
£2,900



Gwely gyda Chwilt Melyn
/ Bed with Yellow Quilt
Acrylig ar banel bedw
/ Acrylic on birch panel
£2,900



Mia Roberts

Gag

Bloc pren / Wood block

£500

Ruth Shelley

Cwyros / Dogwood

Gwydr / Glass

£750

Tawelwch Mwnt

/ The Peace of Mwnt

Gwydr / Glass

£950





Laura Thomas

Wedi'i Ddal / Captured

Cotwm Kala organig wedi'i wehyddu â llaw a chotwm sglein
/ Handwoven organic Kala cotton and mercerised cotton
£895

Gwagle / Void

Lliain a chotwm wedi'i wehyddu â llaw /
Handwoven linen and cotton
£895

Tu fewn / Inside

Gwlân oen wedi'i wehyddu â llaw, sidan a chotwm /
Handwoven lambswool, silk and cotton
£950



Seán Vicary

Llinellau adeiladu / Sitelines
Fideo HD ac Animeiddiad 10m20e /
10m20s HD Video & Animation
naw / nfs





Philip Watkins

Ystafell Ddosbarth / Classroom

Olew ar ganfas / Oil on canvas

£1,750

Theatr / Theatre

Olew ar ganfas / Oil on canvas

£1,750



Stephen West

Ysgolion a Grisiau / Ladders and Stairs

Siarcol ar bapur / Charcoal on paper

£3,000

Emrys Williams

Ceffyl Pren Troea / Trojan Horse

Olew a chwyr ar ganfas / Oil and wax on canvas

£8,000



YMATEB

Fel arfer, gwahoddir beirdd i ymateb i ddarnau o gelf sy'n rhan o'r arddangosfa, a chreu barddoniaeth sydd wedi'i hysbrydoli gan y gwaith celf hwnnw. Eleni, penderfynodd y pwyllgor lleol ddatblygu'r elfen yma, ac ymestyn y gwahoddiad yn ehangach. Mae prosiect creadigol YMATEB yn gwahodd dawnswyr ac ysgrifenydd, gan gynnwys beirdd, i ymateb i ddelwedd o ddarn o waith sydd wedi cael ei ddethol ar gyfer yr arddangosfa. Mae'r ymarferydd creadigol yn dewis y darn celf o lun digidol heb wybod enw'r artist na theitl y gwaith. Mi fydd cod QR wrth ymyl pob darn ymateb, a sgrîn yn y cyntedd er mwyn i chi gael gweld yr ymatebion. Gobeithio y gwnewch chi fwynhau'r datblygiad hwn, yn ogystal â chael boddhad o waith YMATEB.

Diolch i'n holl gyfranogwyr

Normally, poets are invited to respond to works of art that are part of the exhibition, and then to create a poem that has been inspired by that artwork. This year, the local committee decided to develop this element, and extend the invitation more widely. YMATEB is a creative project that invites dancers and writers, including poets, to respond to an image of an artwork selected for the exhibition. The creative person selects the art from a digital picture without knowing the name of the artist or the title of the work. Each response piece will have a QR code, and there will be a screen in the foyer for you to view the responses. We hope you enjoy this development, as well as getting satisfaction from the YMATEB work.

Thank you to all our participants

Elan Elidyr, Matthew Gough, Dylan Huw,
Nia Morais, Anwen Pierce, Keren Meadows



Panel Sefydlog Celfyddydau Gweledol /
Visual Arts Standing Panel

Cadeirydd / Chair
Efa Lois Thomas

Bethan Page
Rhian Wyn Stone
Aled Davies
Ann Jones
Carwyn Evans
Wil Rowlands
Gwenno Angharad
Pete Telford
Rhian Haf
Mirain Fflur
Huw Meredydd Owen
Elin Huws



Derbyniwyd y cyfraniad canlynol gyda diolch /
The following contribution was received with thanks:

Unigryw Cyf £1,000

UNIGRYW

Diolch i... / Thank you to...

Is-bwyllgor Celfyddydau Gweledol, Panel Sefydlog Celfyddydau Gweledol, Detholwyr 2022, Sefydliad Celf Josef Herman, Ifor Davies, Janice Goble, CASW, Llyfrgell Genedlaethol Cymru, Amgueddfa ac Oriel Genedlaethol Cymru, RASW, Comisiwn Dylunio Cymru, Elin Jones, Grŵp Cyngorwyr Plaid Cymru Ceredigion, Cyngor Cymuned Llanbadarn Fawr, Canolfan Celfyddydau Aberystwyth, Oriel CARN, Tŷ Newydd, Gwasg y Bwthyn, Cylchgrawn Cara, Oriel Myrddin, Lumar Transport, Peris & Corr, Siân Teifi, Owen Griffiths, Rhoslynw Plants, Culture Colony, Dawns i Bawb





EISTEDDFOD
Ceredigion

30 Gorffennaf – 6 Awst 2022

Welwn ni chi yn...

EISTEDDFOD
Llŷn ac Eifionydd
5-12 Awst 2023